



The Nathan Hale

Sentinel

Vol. 1, No. 8 Nathan Hale High School, Seattle, Wash. | 4 April 10, 1964

COUNSELING OFFICE GAINS STUDENT "READING ROOM"

College catalogues, vocational and career materials, and armed service information are now available in the counseling office to anyone interested in looking through these materials during their study hall, lunch period, or before or after school. This special reading room is just south of Mrs. Aurelia Lowry's office. It is reserved especially for those students seriously interested in looking over college and vocational materials. To gain admittance to the reading room, students will be required to obtain a green study hall excuse from a counselor. Blue hall passes are not acceptable. Green study hall excuses may be obtained only from a counselor for reading room admittance.

"Out of Frying Pan" for Students' Spring Play Production; In May

The Hale Harlequins will present "Out of the Frying Pan," a comedy by Francis Swann, during the third week of May. Rehearsals are already under way. Out of 80 students who auditioned, 30 were cast. Mrs. Carol Simmons, drama teacher, explained that there are two casts which will appear at separate performances. The play concerns the effort of six young people to enter show business. In their New York apartment, they try to impress a producer living on the floor below. Harangued by the demands of their landlady and by a friend of one of the girls who threatens to reveal that the group lives in a most "unusual manner," their plans are complicated. These and other events help to make the plot a lively one. The cast consists of Jim Godsey and Al Hudson as George, Dick Meston and Walt Crowley as Norman, Crystal Nelson and Janet Sears as Muriel, Diana Brill and Tarsi Pantages as Kate, Barb Taylor and Cathy Ulrich as Marge, Dennis Peterson and Scott Grenz as Tony, Kathy McGrath and Gloria Nelson as Dottie, Linda Payne and Jean Ross as the landlady, and Stu Hitchner and Jerry Hunt as the producer. Student directors are Wendy McVicar, Linda Pederson, Chris Sandberg, and Linda Jo Hardie.

Safety Education Committee Aids Schools in Pinpointing Accidents

Situated in the main office is a chart pinpointing accidents which have taken place in or out of Nathan Hale. This chart is based on information from teachers and student accident report forms. These forms are given to all students who have accidents which result in loss of school time. It is interesting to note that out of fifty accidents, thirteen of these occurred in gym classes. According to Mr. Claude Turner, this may be due to entrance into strenuous activities before a sufficient warm-up period and continuing while tired. Physical education teachers have discussed this issue. A Safety Education Program for Seattle Public Schools has been organized by a Safety Education Committee. The purpose is to plan, direct and coordinate a total program of safety education for all schools. Nathan Hale's area of safety education include courses in driver's education, work in traffic safety and outdoor recreation. In the field of outdoor recreation, the number of skiing accidents indicates a need for a pre-season conditioning program. This is basically because of the number of accidents which have occurred while students were participating in sports without proper muscle conditioning. The chart also shows that most of the accidents occur in the afternoon when skiers are tired. This illustrates the need for moments of rest between skiing periods.

"Climb Every Mountain" Hosts Dads, Daughters at Girls' Activities Banquet

"Climb Every Mountain" was the theme for the Father-Daughter Banquet held Tuesday night, April 7, from six to nine p.m., in the Nathan Hale cafeteria. Guests at the banquet were Nathan Hale girls and their fathers. According to Girls Activities Special Events Committee Chairman, Kitty Stokoe, the theme was chosen because of its "philosophical connotation" and inner meaning. The banquet program opened with Mistress of Ceremonies, Pat Ripley, introducing the entertainment for the evening. The program included Mr. Robert McGrath, tenor, who sang "Climb Every Mountain," the Jan Dentler Trio from Nathan Hale, Dr. Bernard Goiney, who spoke on the hospital ship, *Hope*, and a skit put on by Girls Activities. Dr. Goiney had been aboard the *Hope* on one of its recent voyages and he showed slides taken while on the trip. The skit was a take-off on the television show, "My Three Sons," and was entitled, "My Three Daughters." The skit was written by Barbara Rogers and Suzie Hartstein, and tells of a father and his daughter growing up together. The decorations for the banquet were carried out in red and white, the colors of the subject of Dr. Goiney's talk, the ship *Hope*. Special Events Chairman, Kitty Stokoe, was helped in planning the banquet by; Mrs. Vaux, Girls Activities Adviser, Mr. Sato, who helped with the tickets, and the following committee members; Marilyn Shapton, Barbara Rogers, Suzie Hartstein, Bonnie Walker, Cathy Peterson, Carole Phipps and Marsha Hara.

Art Winners

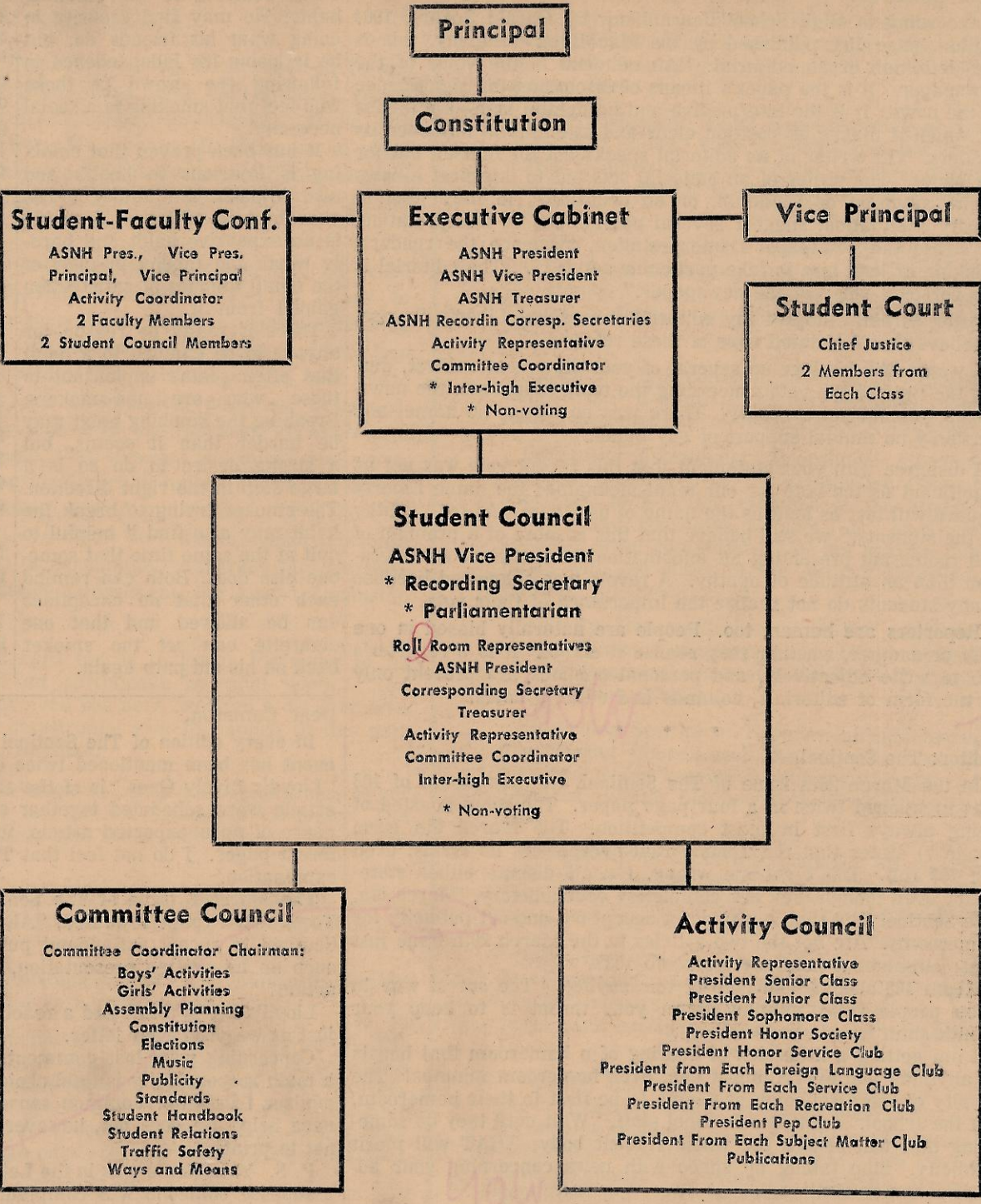
Three competitive Nathan Hale art entries have emerged as winners. They are Maureen McCormik, Judy Carron and Susie

Horvath. Maureen and Judy both received awards in the sculpture division. Susie was a "Mixed Media Blue Ribbon" finalist with her painting entry.

Now Read This!!

Presenting Proposed Constitution for Government

It could well be said that one of the busier committees at Nathan Hale this year has been the Constitution Committee. Finally, the fruits of their efforts can be shown. Having gone through the formal channels of approval by the administration and present student government, the framework is now up for scrutinization by you, the student body. The paramount objective in the minds of all the committee members while working on the Constitution was to devise a plan most suitable (Continued on page 3)



Annual Staff Announces Members For 1964-'65 Publication

The selections for the 1964-65 annual staff were announced Friday morning. New staff members include: Errol Lynne Ackerson, Rich Alverdes, Laurie Boatman, Layne Boyce, Judy Carter, Cindy Cole, Barb Dickinson, Jeanne Dille, Marsha Hara, Marsha Hollingsworth, Judy Jones, Sharan Jones, Bruce McCormack, Crystal Nelson, Rea Petersen, Judith Ann Pilling, Pat Ripley, Judy Steele, Linda Stevely, Barbara Stowell, Jill Thatcher, Dick Shepard, John Rowlands, and Jennifer Smith.

Formosans Attend Nathan Hale

Two former Formosan students are now attending Nathan Hale High School. Who are they? Betty Chiu and her brother, Tony, junior and sophomore respectively, arrived in the United States via Japan and Hawaii in December of 1962. They now make the United States their home after living in Formosa all their lives. In one year Nathan Hale will have three of the Chiu family. Mi-L will graduate from Jane Addams. Their parents have lived here six years while Betty and Tony attended boarding schools in Formosa. Better and more numerous opportunities influenced their decision to live here. Betty is repeating her junior year to better acquaint herself with the English language. She attended Edison Technical School and took English for three quarters, then enrolled at Nathan Hale last September. Chinese is the language spoken in Formosan schools. Betty went to Tanchung High School in Formosa. Girls and boys each had their own buildings. Students were required to wear uniforms. More homework was given to Tanchung High School students. As a junior in her homeland the courses at her school were not much different than those offered at Nathan Hale. Betty took English, language arts (Chinese), chemistry, geography, world history and physical education. In her spare time she enjoys her art work and hopes to someday become a beautician.

Sportscope

By Jim Phillips

In a recent meeting of the Washington School Directors' Association Committee a request to change the Washington State school policy toward high school basketball games was submitted to the Washington Interscholastic Activities Association.

The request stated, "Washington Interscholastic Activities Association is asked to issue a statement of general policy opposed to school night basketball games in future years. This need not be a binding rule, but leagues are asked to make a real effort toward establishing Friday-Saturday and holiday schedules."

Why the Washington School Directors' Association Committee submitted this request is a matter for question. Having high school teams play only on Fridays, Saturdays, and holidays would stretch the necessary schedule, cause lack of attendance, cut into school spirit and cause considerable inconvenience to players, students, fans and teachers.

Some believe that the move is to cut down game expenses or curtail the-day-after-game absentee rate increase.

Expenses for a game would be the same Friday or Tuesday, Monday or Saturday. Teachers who hold certain duties such as usher squad advisor, ticket manager and two people—one male, one female — to be present in cases of emergency, are all paid. They would be paid the same amount no matter what day the game was played. So monetary cutbacks cannot be a logical explanation for the Washington State Directors' Association Committee's reported action.

Many teachers say that one can tell the day after a game by looking at the attendance bulletin. This may or may not be true, but if athletic contests cause an abrupt increase in absenteeism why pick out basketball and say "no school night games"? Track, baseball and tennis all play games after school so why the ultimatum to limit basketball?

It might seem a solution to have basketball games on the nights during a weekend, but students have jobs and many other activities which would inhibit their attending. What is a high school basketball game without stands full of screaming student fans?

CONGRATULATIONS: Mr. Don Lundberg! Besides coaching the Nathan Hale Raider Baseball team, Mr. Don Lundberg is an author. In the spring issue of the Washington Coach, an article by Mr. Lundberg "Developing The High School Catcher" appeared. This article explained in great detail the development and improvement of a high school catcher.

A. Randolph Ulberg
O.D.

Northgate Optometrist
For 20/20 Vision Call
Em. 4-20/20

A & M Cleaners

QUALITY CLEANERS
SHIRT LAUNDRY
8619 35th N.E. LA 4-4797

It's the 12010 S. P. Way

Sand Point Way Barber Shop

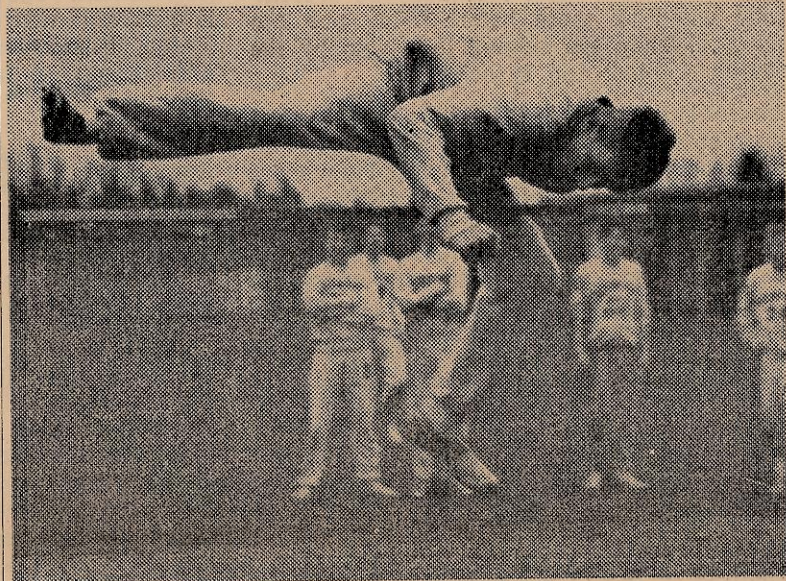
for good
\$1.50 haircuts

Tennis "Racketeers" Succeed In Bid for Metro Debut Win

Nathan Hale High School successfully opened their first tennis season by downing Mountlake Terrace High School 5-4. This match, held April 2, was Hale's first varsity spring sport victory. In each meet, there are six single matches. Hale's "Racketeers" were victorious in four of these six individual contests. Singles results were: Dick Huey, of Nathan Hale, beat Terrace's Dennis Pownall 7-5, 6-3; Nathan Hale's Clarke Gray beat Seahawk Ron Kimball 6-0, 6-2; Gary Barrett, of Mountlake Terrace, beat Raider Tim Reckard 7-5, 6-1; Brad Fowler, of Nathan Hale, beat Bill Wakefield of Mountlake Terrace, 6-2, 7-5; Dale Potzin, of Mountlake Terrace, beat Hale courtman Ben Babcock 6-4, 6-3; and John Maki, of Nathan Hale, beat Terrace courtman Jim Robertson 6-1, 6-3.

Three doubles matches are also played in every school meet. In this division, Nathan Hale won one match, Huey-Fowler, of Nathan Hale, beating Pownall-Potzin 6-2, 7-5. Mountlake Terrace staged a come-back with two double match wins, Kimball-Wakefield, of Mountlake Terrace, beat Gray-Bogus 6-2, 8-6, 8-6, and Barrett-Robertson, of Mountlake Terrace, beat Maki-Hoskins, of Nathan Hale 6-4, 10-8, 8-6. The last minute effort of the Seahawks could not upset the Raiders, and Nathan Hale became victorious in their first varsity tennis Metro contest. For this first contest, Hale's tennis ladder was as follows: No. 1 Dick Huey, No. 2 Clarke Gray, No. 3 Tim Reckard, No. 4 Brad Fowler, No. 5 Ben Babcock, and No. 6 was John Maki.

The next tennis match will be on April 8th at 3:00, when the Nathan Hale Raiders meet the Ballard Beavers at Ballard.



Raider High Jumper, John Mays, clears the bar in practice at Jane Addams field. *at what height?*

N. Hale Harriers Out-Distanced In First Varsity Track Meet

The Nathan Hale track team lost its first varsity meet at the hands of Shoreline's thin-clad Spartans. The meet which was held Friday, April 3, at the Edmond's stadium ended with Hale losing 17½ to Shoreline's 91½.

The results for running events in this meet were:

440 yards—Doug Waite, Jeff McClown and Mike Reckard finished one-two-three to capture 9 Hale points. Waite crossed the finish line in 53.8 seconds.

100 yard dash — Matlock of Shoreline first, McKim second and Reckard of Nathan Hale third.

220 yard — McKim of Shoreline first, Gilbert and Anderson second and third for Nathan Hale.

880 yard — Wiedl and Marts finished first and second for the Spartans while Hale's Whittaker was third.

120 yard high hurdle — Shoreline's Hubert and Ogle took first and second in this event.

180 yard low hurdle — Another clean sweep for the Spartans as Ogle, Brannan and Gemill placed one-two-three.

The field events were: Shot Putt Skoog and Becker of Shoreline taking first and second spot, while Quesnell of Hale placing third.

High Jump — Spartans Leith and Hulbert jump to first and second place. Nathan Hale's John Mays placed third.

Broad Jump — Shoreline took all three positions with Barbieri, McKim and Brannan placing in order one-two-three.

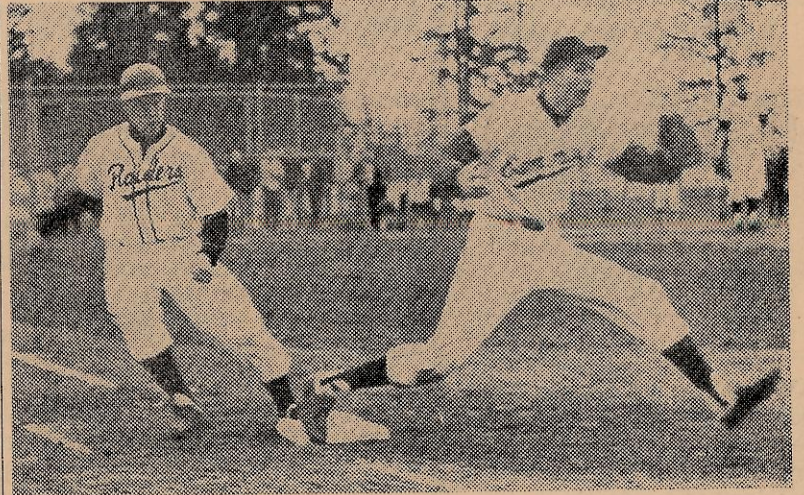
Pole Vault — Lindjord and Prestgard place one-two for Shoreline with Smith (s) and Littlejohn of Nathan Hale tying for third.

Mile Relay — was another all Spartan event with the team of McDonald, Mismar, Miller and Gemill winning.

800 Relay — In this event too the Spartans down Hale with Brannan, Jessup, Ogle and McKim taking the honors.

Tonight the Hale Raiders will meet the Mountlake Terrace Seahawks at Edmonds stadium. The meet will begin at 3:15.

GET OUT AND SUPPORT THE TRACK TEAM. *already said on editorial page*



SAFE AT FIRST was Raider Brad Gunn as he tags the base ahead of the throw from the Edmonds right fielder.

Raiders Batted Down -- Drop First Two!

On Wednesday, April 1, Nathan Hale opened their season against Edmonds at the Tigers homefield. The game was close from the opening pitch, with both hurlers pitching an outstanding game. Nathan Hale presented their only threat of the game in the second inning when, with two out Mike Leslie delivered the first hit of the season for the Raiders. He was then followed by Ron Case who drew a walk. The inning was ended when Bill Driver grounded out. The highlight of the game was a sixth inning home run, by the Tigers pitcher Paul Morris, to complete the scoring at 2 to 0 in favor of Edmonds.

Roosevelt Game

	AB	R	H
Miller, Steve 2b	3	1	1
Hooper, Jon p	1	0	0
Allan, Rick ss	3	0	0
Chase, Russ lf	1	0	0
Leslie, Mike rf	3	0	1
Brown, John lf	3	0	0
Harmon, Gary lb	1	0	0
Gunn, Brad p	3	0	1
Fulwiler, Bob lb	1	0	0
Olson, Don 2b	1	0	0
Driver, Bill c	2	0	0
Case, Ron cf	2	0	1
DeFrance, Randy	1	0	0

Ballard Game

	AB	R	H
Miller, Steve 2b	3	0	0
Allan, Rick ss	3	0	0
Gunn, Brad 3b	3	0	1
Chase, Russ cf	3	0	0
Brown, John lb	3	0	0
Leslie, Mike rf	3	0	1
Case, Ron lf	1	0	0
Driver, Bill c	2	0	0
Valdez, Mike p	2	0	0

Pitchers	ip	h	r	bb	so
West	2	4	1	2	12
Gunn	4	5	7	2	5
Miller	1	4	3	0	1
Hooper	2	3	6	4	0

Raiders vs. Roughriders

For the Raiders second game they returned home to meet the Roosevelt Roughriders at the Raiders homefield. After a fine three inning pitching performance by Raider Brad Gunn, he developed some control trouble and was replaced by Steve Miller who also had trouble controlling the score-happy Roughriders. The Raiders had trouble hitting against the stalwart pitching of Roosevelt's George West, but they did manage to score one run. Steve Miller got the honors as he scored the first run of the season for the Raiders, but it was to no avail as the Roughriders scored 16 runs while the Raiders dropped their second game 16-1.

• Typewriter Rentals • School & Art Supplies

CLARK STATIONARY and OFFICE SUPPLY

1275 Bothell Way

EM. 2-6220

TACO TIME

WHAT IS A TACO?

I

.. We feature a crisp, lightly, deep fried corn tortilla with specially seasoned lean ground beef, flavored with six month sharp cheddar cheese, topped with freshly cut lettuce and tomato.

M

E

For that real change of pace in food, stop and see us soon. We feature take out and inside service.

already said on editorial page when it belongs!
539 N.E. 110th

Where you see the revolving cactus

Any Time Is Taco Time!

Expert Repairs — All Instruments — **ROY E. KANN**

BUY - SELL - TRADE - NEW & USED

Musical Instrument Service

Office, EM. 4-6260

12710 Bothell Way